

Milestones (new)

bass lines played by Todd Coolman

1 Gm7 Gm7 Am7 Gm7 Am7

5 Gm7 Gm7 Am7 Fmaj7 D7

9 Gm7 Gm7 Am7 Gm7 Am

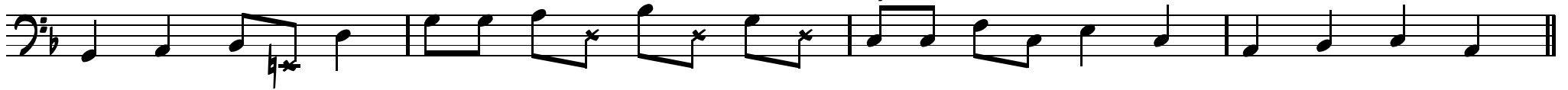
13 Gm7 Gm7 C7 Fmaj7 Fmaj7

17 *straight* Gm7 Am7 Gm7 Am(aeolian)

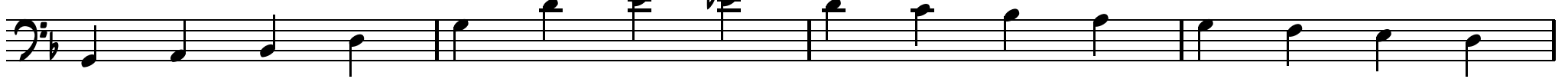
The bass line is written in G minor (two flats) and 4/4 time. It consists of five lines of music. The first line starts with a Gm7 chord and a Gm7 chord, followed by an Am7 chord and a Gm7 chord. The second line starts with a Gm7 chord and a Gm7 chord, followed by an Am7 chord, an Fmaj7 chord, and a D7 chord. The third line starts with a Gm7 chord and a Gm7 chord, followed by an Am7 chord, a Gm7 chord, and an Am chord. The fourth line starts with a Gm7 chord and a Gm7 chord, followed by a C7 chord, an Fmaj7 chord, and an Fmaj7 chord. The fifth line starts with a *straight* Gm7 chord, followed by an Am7 chord, a Gm7 chord, and an Am(aeolian) chord. The notation includes various articulations such as slurs, accents, and a fermata.

45 Gm7

Fmaj7



49 Gm7



53

Fmaj7



straight

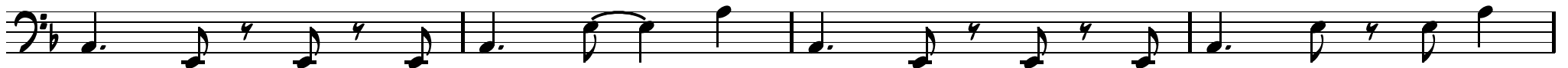
57 Am(aeolian)



61



65 Am(aeolian)



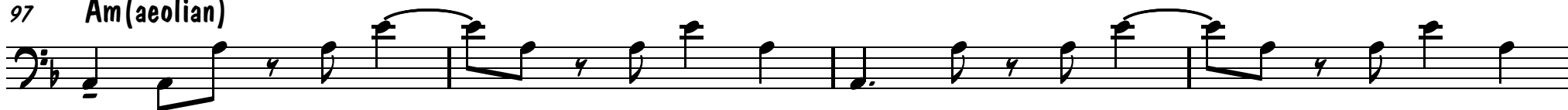
93 Gm7

Fmaj7



straight

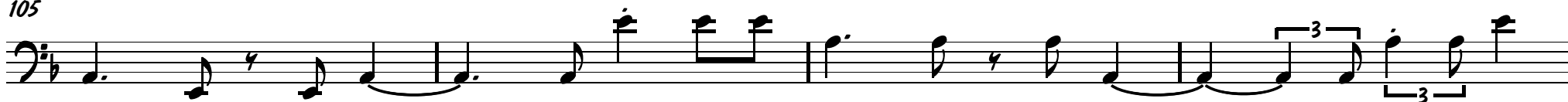
97 Am(aeolian)



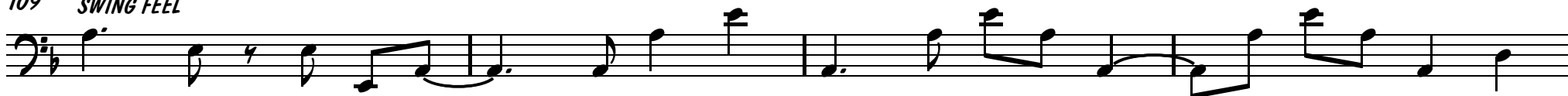
101



105



109 SWING FEEL



113 Gm7

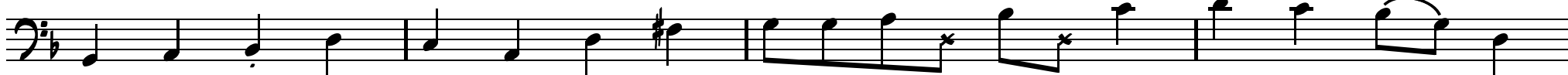


117 Gm7

Fmaj7



121 Gm7



125



BASS LINE CONTINUES...